

## ATEX SCALES

**2/22  
ZONE**



### **ZONE 2**

- » Printers
- » Spray painting plants
- » Petrol stations (areas that are accessible to customers)
- » Textile and dyeing plants
- » Chemical industry
- » Waste processing plants
- » Petrochemical industry
- » Pharmaceutical industry
- » Plastics factories
- » Furniture factories

### **ZONE 22**

- » Cereal mills
- » Waste treatment plants
- » Textile industry
- » Chemical industry
- » Waste processing plants
- » Pharmaceutical industry
- » Woodworking machinery
- » Cereal, legume and coffee warehouses

### **WEIGHT INDICATOR FOR CLASSIFICATION 2 & 22 ATEX ZONES IN GROUP II, CATEGORY 3**

- » *Zone 2: places where flammable gases or vapours are unlikely to be present or are present for short periods of time.*
- » *Zone 22: places where combustible dust is unlikely to be present or is present for short periods of time.*

### **PROTECTION METHODS IN ACCORDANCE WITH:**

- » ATEX II 3G Ex nR IIC T6 Gc X (for gases)
- » ATEX II 3D to IIIC T85°C Dc IP68 (for dust)

# BMX

## BENCH SCALE DOBLE MARCO TUBULAR

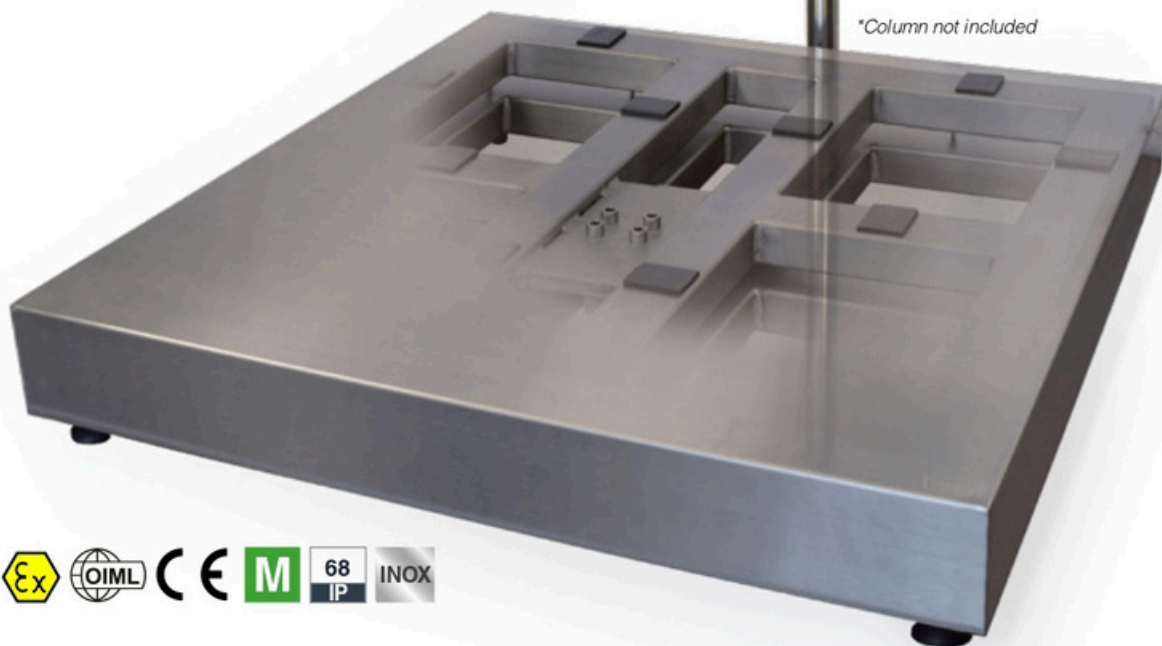
Scales with platform with double tubular frame and load cell in stainless steel.

Light sheet to be removed and open structure designed to be cleaned and moved easily.

Multi-dimensional scale with GI400i EX indicator for **ATEX 2/22 zone**.



\*Column not included



### INDICATOR FUNCTIONS

- » REPEATER
- » PIECE COUNTING
- » TOTALISATION
- » CHECKWEIGHER
- » NEGATIVE CHECKWEIGHER
- » LIMITS
- » DOSAGE
- » More than 30 protocols
- » System of 2 passwords to lock out functions
- » 8 format of predefined tickets and 1 customizable (associated software)
- » Printing configurable menu: number of copies, cutter on/off, line feed
- » Watchdog system to reset automatically if the indicator gets blocked

### PRINTING

- » Programmer of three headings (PC), code and total.

### LANGUAGES

- » English, French, Italian, Portuguese and Spanish

### METROLOGICAL SPECIFICATIONS

- » III and IIII classes
- » Max. number of verification steps 6000
- » Monorange, multirange or multiinterval (n ≤ 3000, per partial range of weighing)

### SOFTWARE\*

- » For monitoring, management and control of access to the weighing system



\*contact us for more information

# BMX

## FOR 2/22 ZONES



Cable glands for ATEX zones

### INDICATOR FEATURES

- » Operation in zones 2/22 via power supply
- » Working temperature -10°C to 40°C
- » Stainless steel housing
- » Reclining wall support
- » Units: kg
- » Other features:
  - » Integrated clock and calendar
  - » Format tickets with configurable weighing code
- » LCD display:
  - » Display with 6 digits of 40mm
  - » Backlight function: On/off/auto
  - » Screen colour indication with checkweigher function
- » 2 RS232 output

### LOAD CELLS FEATURES

- » Completely made of stainless steel.
- » High quality protection barrier with special silicones.
- » 6-wire cable.
- » Protection IP 68 | IP 69k
- » OIML approval 3000 divisions OIML R60 class C
- » ATEX version

### LOAD CELLS

- » **190i:** Platform 400 x 400 mm de 30 and 60 kg | Stainless steel | 3000 divisions OIML R60 | Protection IP69k.
- » **IBM 1:** Platform 400 x 400 mm de 150 kg | Plataformas 500 x 500 mm | Stainless steel | 3000 divisions OIML R60 | Protection IP67.
- » **IBM 2:** Platform 600 x 600 mm | Stainless steel | 3000 divisions OIML R60 | Protection IP68.
- » **IBM 3:** Platform 800 x 800 mm. | Stainless steel | 3000 divisions OIML R60 | Protection IP67 - IP68.

### REFERENCES

Dimensions (mm) A x B	Capacity (kg)	Readout (g)	
400 x 400	30	10	<b>AVAILABLE IN 2 VERSIONS OF PLATFORM:</b>  <b>V1 PAINTED STRUCTURE AND STAINLESS STEEL SHEET</b>  <b>V2 COMPLETELY STAINLESS STEEL AISI-304</b>
400 x 400	60	20	
400 x 400	150	50	
500 x 500	30	10	
500 x 500	60	20	
500 x 500	150	50	
600 x 600	60	20	
600 x 600	150	50	
600 x 600	300	100	
800 x 800	300	100	
800 x 800	600	200	

- » ATEX II 3G Ex nR IIC T6 Gc X (for gases)
- » ATEX II 3D tc IIIC T85°C Dc IP68 (for dust)

### Accessories

- » Column

# BEX

## EXTRAFLAT SCALES

The load cells and the junction box are kept inside the sides of the scale platform, made by an angle profile, which at the same time act as a structural element of the platform.

To guarantee the platform position, four root plates are fixed on ground using anchor bolts, and stoppers are added for the feet of the load cells.

4-load cell multi-dimensional scale with GI400i EX indicator for **ATEX 2/22 zone**.

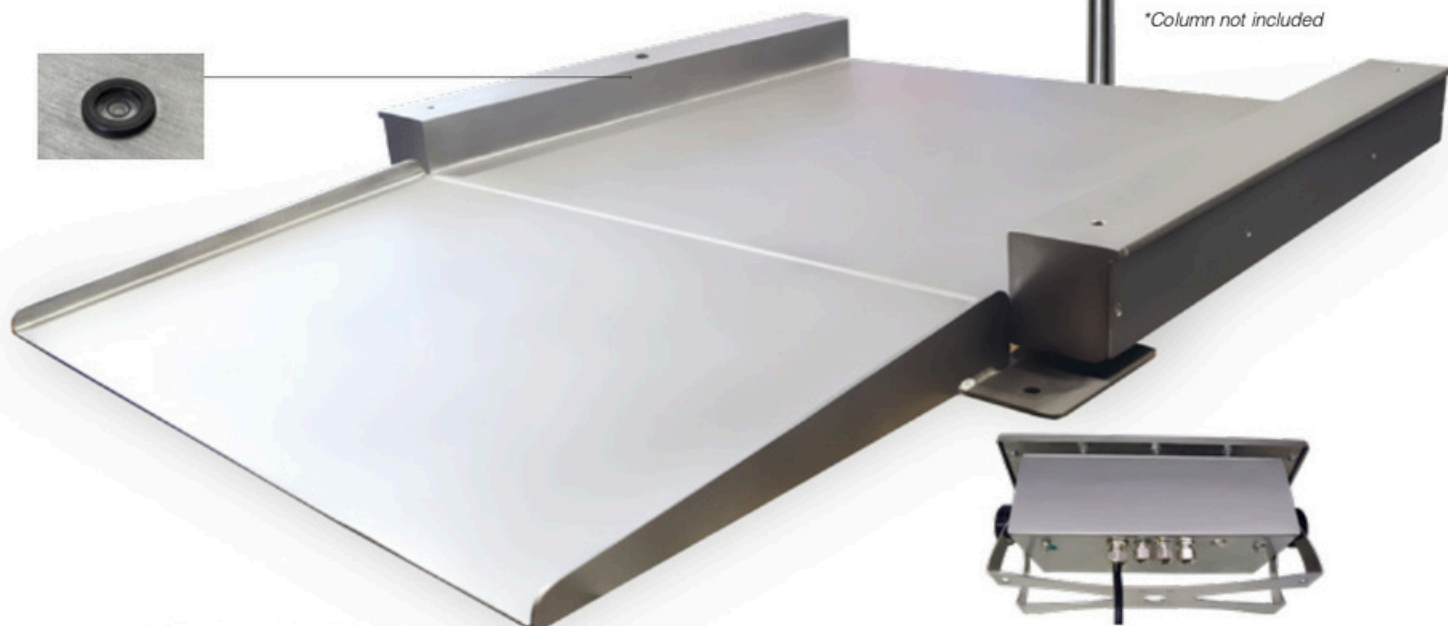


### CHECKWEIGHER FUNCTION



With visual value alarm

\*Column not included



Cable glands for ATEX zones

### INDICATOR FUNCTIONS

- » REPEATER
- » PIECE COUNTING
- » TOTALISATION
- » CHECKWEIGHER
- » NEGATIVE CHECKWEIGHER
- » LIMITS
- » DOSAGE
  
- » More than 30 protocols
- » System of 2 passwords to lock out functions
- » 8 format of predefined tickets and 1 customizable (associated software)
- » Printing configurable menu: number of copies, cutter on/off, line feed
- » Watchdog system to reset automatically if the indicator gets blocked

### PRINTING

- » Programmer of three headings (PC), code and total.

### LANGUAGES

- » English, French, Italian, Portuguese and Spanish

### METROLOGICAL SPECIFICATIONS

- » II and III classes
- » Max. number of verification steps 6000
- » Monorange, multirange or multiinterval (n ≤ 3000, per partial range of weighing)

### SOFTWARE\*

- » For monitoring, management and control of access to the weighing system



\*contact us for more information

# BEX

## FOR 2/22 ZONES

### INDICATOR FEATURES

- » Operation in zones 2/22 via power supply
- » Working temperature -10°C to 40°C
- » Stainless steel housing
- » Reclining wall support
- » Units: kg
- » Other features:
  - » Integrated clock and calendar
  - » Format tickets with configurable weighing code
- » LCD display:
  - » Display with 6 digits of 40mm
  - » Backlight function: On/off/auto
  - » Screen colour indication with checkweigher function
- » 2 RS232 output

### LOAD CELLS

- » **350i v ATEX:** Stainless steel | 3000 divisions OIML R60 | Protection IP68 | IP69k.

### JUNCTION BOX

- » ATEX certified hermetic aluminium junction box.

### STRUCTURE FEATURES

- » Thickness of the sheet: 5 mm
- » Height surface: 50 mm / total height: 115 mm



### LOAD CELL FEATURES

- » Completely made of stainless steel.
- » Hermetically sealed, fully welded.
- » Protection IP 68 | IP 69k
- » OIML approval 3000 divisions OIML R60 classe C
- » ATEX version



ATEX zones cable glands

### REFERENCES

Dimensions (mm) A x B	Capacity (kg)	Readout (g)	
800 x 800	300	100	
800 x 800	600	100	
1000 x 1000	300	100	
1000 x 1000	600	200	
1250 x 1000	600	200	
1250 x 1000	1500	500	
1250 x 1000	3000	1000	
1250 x 1250	600	200	<b>AVAILABLE IN 2 VERSIONS OF PLATFORM:</b>
1250 x 1250	1500	500	<b>V1. PAINTED</b>
1250 x 1250	3000	1000	<b>V2. COMPLETELY STAINLESS STEEL AISI-304</b>
1500 x 1250	600	200	
1500 x 1250	1500	500	
1500 x 1250	3000	1000	
1500 x 1500	1500	500	
1500 x 1500	3000	1000	
2000 x 1500	1500	500	
2000 x 1500	3000	1000	

### ACCESSOIRES: Second ramp

- » length 500 mm
- » 10% of incline
- » stainless steel

Dimensions (mm)	
800 x 800	
1000 x 1000	
1250 x 1000	<b>PAINTED AND STAINLESS STEEL VERSIONS</b>
1250 x 1250	
1500 x 1250	
1500 x 1500	
2000 x 1500	

*Nota: Second ramp to facilitate entry and exit from both sides of the platforms*

### Accessories

- » Column

- » ATEX II 3G Ex nR IIC T6 Gc X (for gases)
- » ATEX II 3D tc IIIC T85°C Dc IP68 (for dust)

# PTX

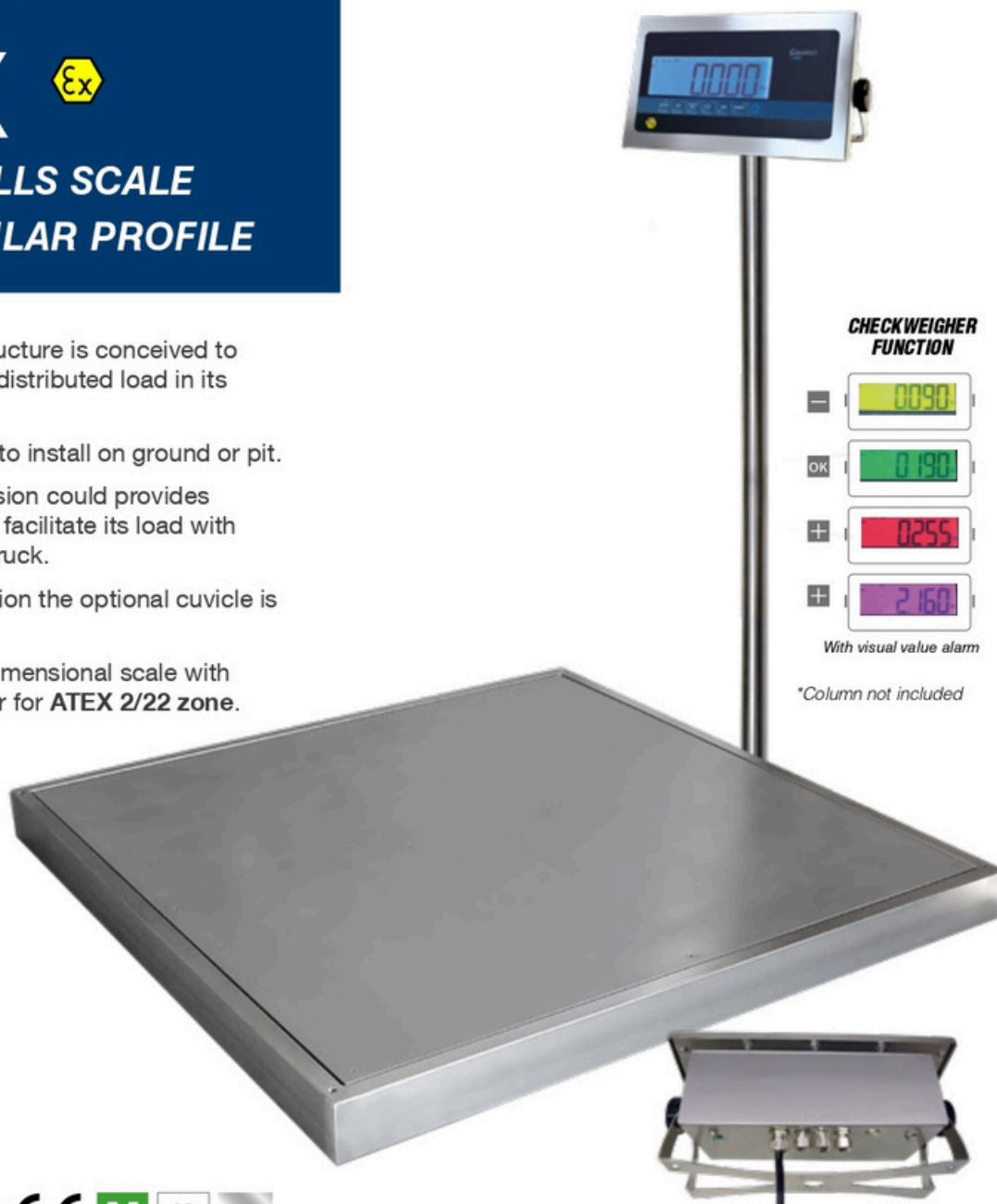
## 4 LOAD CELLS SCALE WITH TUBULAR PROFILE

Its light tubular structure is conceived to support uniformly distributed load in its surface.

Platform available to install on ground or pit.

- » On ground version could provides optional ramp to facilitate its load with forklift or pallet truck.
- » For pit installation the optional cuvicle is provided

4-load cell multi-dimensional scale with GI400i EX indicator for **ATEX 2/22 zone**.



### CHECKWEIGHER FUNCTION



With visual value alarm

\*Column not included

Cable glands for ATEX zones



### INDICATOR FUNCTIONS

- » REPEATER
- » PIECE COUNTING
- » TOTALISATION
- » CHECKWEIGHER
- » NEGATIVE CHECKWEIGHER
- » LIMITS
- » DOSAGE
- » More than 30 protocols
- » System of 2 passwords to lock out functions
- » 8 format of predefined tickets and 1 customizable (associated software)
- » Printing configurable menu: number of copies, cutter on/off, line feed
- » Watchdog system to reset automatically if the indicator gets blocked

### PRINTING

- » Programmer of three headings (PC), code and total.

### LANGUAGES

- » English, French, Italian, Portuguese and Spanish

### METROLOGICAL SPECIFICATIONS

- » III and IIII classes
- » Max. number of verification steps 6000
- » Monorange, multirange or multiinterval (n ≤ 3000, per partial range of weighing)

### SOFTWARE\*

- » For monitoring, management and control of access to the weighing system



\*contact us for more information

# PTX

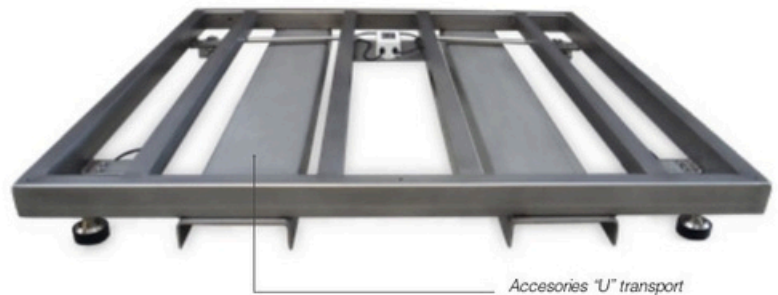
## FOR 2/22 ZONES

### INDICATOR FEATURES

- » Operation in zones 2/22 via power supply
- » Working temperature -10°C to 40°C
- » Stainless steel housing
- » Reclining wall support
- » Units: kg
- » Other features:
  - » Integrated clock and calendar
  - » Format tickets with configurable weighing code
- » LCD display:
  - » Display with 6 digits of 40mm
  - » Backlight function: On/off/auto
  - » Screen colour indication with checkweigher function
- » 2 RS232 output

### LOAD CELL FEATURES

- » Completely made of stainless steel.
- » Hermetically sealed, fully welded.
- » Protection IP 68 | IP 69k
- » OIML approval 3000 divisions OIML R60 class C
- » ATEX version



Accessories "U" transport

### LOAD CELLS

- » **350i v ATEX:** Stainless steel. | 3000 divisions OIML R60 class C3 | Protection IP68 | IP69k.

### JUNCTION BOX

- » ATEX certified hermetic aluminium junction box.

### STRUCTURE FEATURES

- » Thickness of the sheet: 5 mm
- » Height 100mm / 120mm (110mm ou 130mm with cuvicle) depending on capacity and dimension.

### REFERENCES

Dimensions (mm) A x B	Capacity (kg)	Readout (g)
800 x 800	300	100
800 x 800	600	200
1000 x 1000	300	100
1000 x 1000	600	200
1250 x 1000	600	200
1250 x 1000	1500	500
1250 x 1000	3000	1000
1250 x 1250	600	200
1250 x 1250	1500	500
1250 x 1250	3000	1000
1500 x 1250	600	200
1500 x 1250	1500	500
1500 x 1250	3000	1000
1500 x 1500	1500	500
1500 x 1500	3000	1000
2000 x 1500	1500	500
2000 x 1500	3000	1000

#### AVAILABLE IN 3 VERSIONS OF PLATFORM

V1. PAINTED

V2. STRUCTURE PAINTED AND STAINLESS STEEL SHEET

V3. COMPLETELY STAINLESS STEEL AISI-304

### ACCESSORIES "U" TRANSPORT

#### Accessory U for the transport of the Platform.

Soldier under the structure.

Dimensions (mm)	PAINTED AND STAINLESS STEEL VERSIONS
800 x 800	
1000 x 1000	
1250 x 1000	
1250 x 1250	
1500 x 1250	
1500 x 1500	
2000 x 1500	

#### Other accessories

Ramps, column, cubicles, frame to pit, galvanized rollers.

- » ATEX II 3G Ex nR IIC T6 Gc X (for gases)
- » ATEX II 3D tc IIIC T85°C Dc IP68 (for dust)



FREE DOWNLOAD  
**CONFIGURATION SOFTWARE**

**FOR GI4XX INDICATORS SERIE**  
Available at [www.giropes-solutions.com](http://www.giropes-solutions.com)



**GIscale**

Connection to 1 indicator (GI400 or GI410)  
Connection with the indicator via COM

CONSULT FOR

**MANAGEMENT SOFTWARE**



# TP410 ATEX WEIGHING PALLET TRUCK

**GIROPES**  
WEIGHING SOLUTIONS  
CE M Ex INOX

**WITH EXTERNAL  
BATTERY**



**M** 68  
IP

UP TO  
**400**  
Items  
IN TARE  
MEMORY

  
PIECE COUNTING  
function

  
CHECKWEIGHER  
function

  
LCD  
LCD  
screen

**EN**

# TP410 ATEX

PALLET TRUCKS  
WITH INDICATOR  
GI410iLCD ex

WITH LOAD CELLS  
& JUNCTION BOX IN  
ATEX PROTECTION

ACCUMULATION

ZERO

TARE

GROSS/NET

PIECE COUNTING FUNCTION

CHECKWEIGHER WITH LCD SIGNAL

UP TO  
**400**  
items  
IN MEMORY  
TARE

Weight tare indicator with a memory to up to 400 item 1, 400 item 2 and 10 prefixed tares.

The introduction of the details of the product can include code, description, tare, EAN code and the characterization of the product is according to its operating platform (weight, target weight or unit weight for the piece-counting function).

The introduction of the details of the customers can be done by code, description or pretare. This series also includes the possibility to do lists of stored weights according to detail or filtered according to customer, product or date.



## PIECE COUNTING

This function allows the user to count the pieces which have been loaded on the platform according to the unit average weight PMU which has been scheduled previously.

It also allows the counting of the PMU according to the amount of pieces which have been loaded.



## TOTALISATION

This function allows the user to do the addition of the weights accumulated in the memory and shows the total number of weights.



## CHECKWEIGHER

The weight indicator GI410i includes the mode checkweigher or pass-not pass.

It can manage automatically up to 7 zones using weight limits for each one of them. By selecting the desired weight, the indicator allows the user to choose superior or inferior limits through value or percentage.

**48<sup>h</sup>**  
DURATION

**EXTERNAL  
BATTERY**



Easily  
removable

68  
IP



**STAINLESS STEEL & PAINTED  
IP68 FOR ATEX ZONES**



## TECHNICAL FEATURES

Capacity 1000/2000kg

Accuracy 0.2/0.5 kg (0.5/1 kg verified version)

Units: kg

External NiMH rechargeable 7,2V 12Ah battery.

Power supply with charger battery NiMH 110 - 240V AC 50/60Hz.

» External battery of 7,2V with 48 hours of duration  
(1 unit included, optional extra battery)

SERIE  
**TP410 ATEX**  
stainless steel & painted versions

Wide range of pallet trucks for different environment and uses



\*Review the requirements for forks for weighing certain light metals in ATEX zones.

**TP410**

Description	Code #
TP410 painted with digital indicator LCD ATEX with external battery	290030
<b>M</b> TP410 painted with digital indicator LCD ATEX with external battery	290031
TP410i stainless steel with digital indicator LCD ATEX with external battery	290032
<b>M</b> TP410i stainless steel with digital indicator LCD ATEX with external battery	290033

*\*with battery included*

**OPTIONALS**

Description	Code #
Additional external battery ATEX Zone 2/22	220041
Additional plate ALIBI/DSD memory	220008
Kit Wheels with coating polyurethane outer	220044
Stainless steel fork kit for TP pallet trucks	291001