



CUSTOM MADE MACHINE

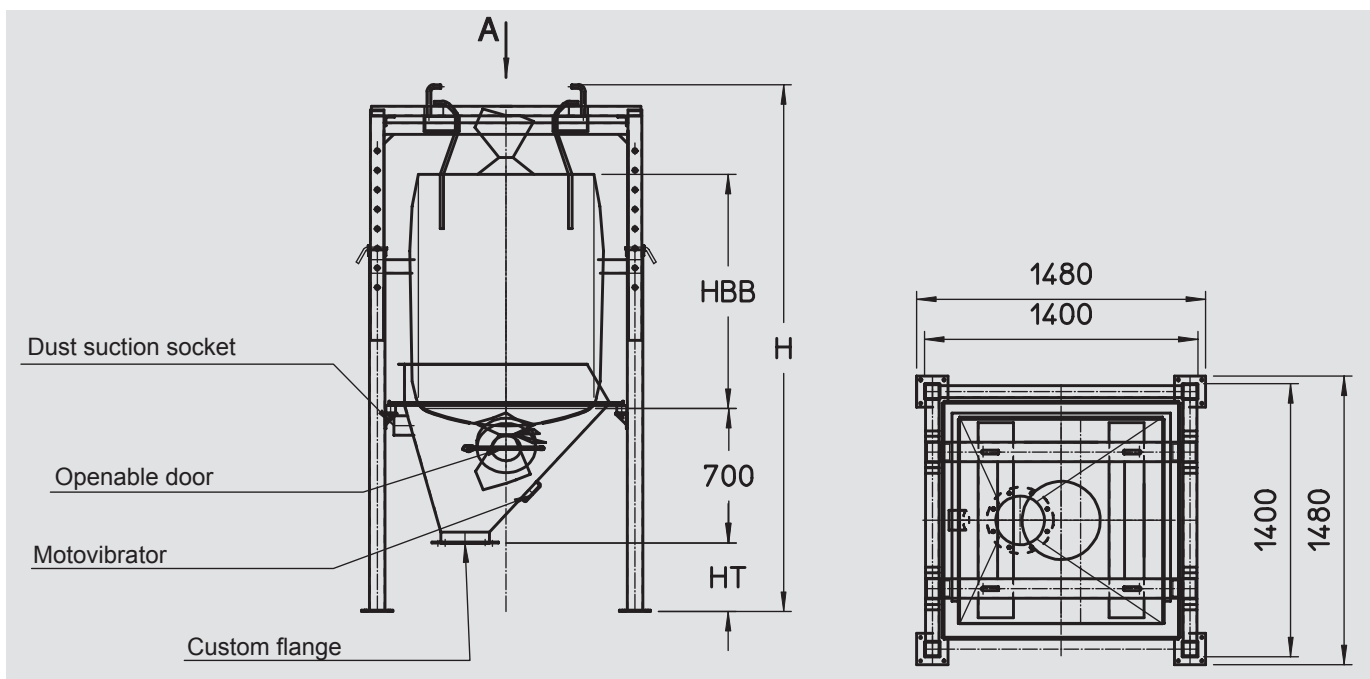


AVAILABLE IN STAINLESS STEEL AISI 304 / 316



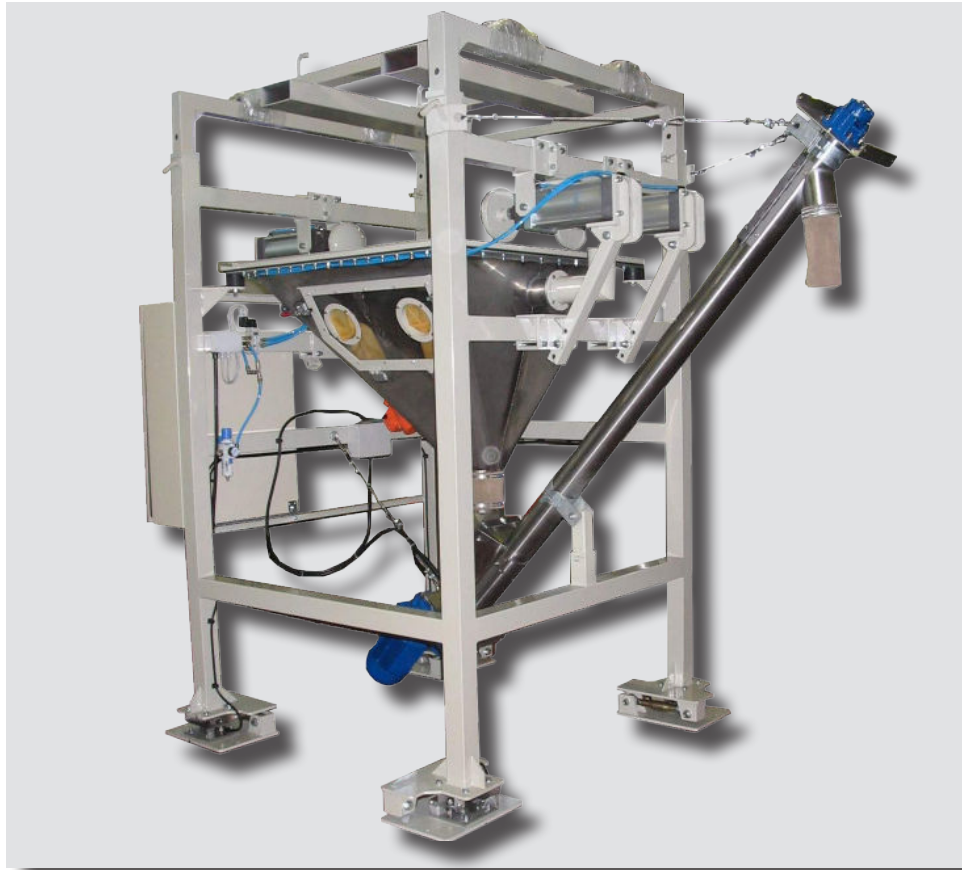
SBB STATION MOD. SBB-C COMPLETE WITH SCREW FEEDER AND LOCAL CONTROL PANEL

Like all the machines manufactured by Stad, SBB plants - suitable to batch powdery products stacked inside big bags - are designed and manufactured according to customer's specification. The basic model consist of a mobile telescopic big bag holder frame that can be moved with a forklift (to be adjusted along the big bag height), a stationary frame, a powder-charging hopper, and a mechanical extractor suitable to the products being extracted (weighing belt, metering screw, rotary valve, ecc...). This plant can be customized by adding several devices, such us: electronic weighing and material batching control; big bag and fluidising flow aids electropneumatic shaking in case of non-smooth powders.

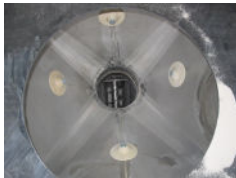


SBB

$$H = HT + HBB + 1200\text{mm}$$



SBB EXAMPLES OF AVAILABLE OPTIONS



FLUIDISING FLOW AIDS



BIG BAGS MOVING DEVICE



WINDOW WITH GLOVES



BIG BAGS HORIZONTAL MOVING DEVICE

TECHNICAL FEATURES

| | |
|------------------------|--|
| Main structure | Carbon steel or stainless steel AISI 304 / 316 |
| Loading hopper | Carbon steel or stainless steel AISI 304 / 316 |
| Frame structure | Adjustable telescopic height |
| Anti-dust plan | Black or food grade rubber |
| Access door | Stainless steel with mechanical stop |
| Anti-vibration mounts | Steel and rubber 60ShA |
| Fluidification systems | Optional |
| Weighing system | Optional with compression load cells |
| Anti-tilt system | Standard when there is the weighing system |
| Window with gloves | Optional |
| ATEX conformity | Available as an option for ATEX 22 zones |

